



KEY VOCABULARY

design

materials

properties

fabric

template/pattern

sew

needle

thread

stitch

feature stitch

seam

fastening

**planning** how something is going to **look and work**

what **things are made from**, for example glass, wood, fabric

the way a **material looks**, how it **feels**, or **what it can do**

**cloth** made from threads – **clothes** are made from fabric

a shape **cut out of paper** used for cutting the same shape out in fabric

making **stitches** with a **needle**

a **thin piece of metal** with a point at one end and a hole at the other end **used for sewing**

a **long thin strand** used in sewing

a **loop of thread** made by a needle when sewing – running stitch is a kind of stitch

a **stitch** which you **can see** and acts like a **decoration**

a line where **two pieces of fabric are joined together** usually by stitching – running stitch can be used to create a seam

something that is used for **closing an object** – like a zip, Velcro or ribbon tied together

making a design

**user**

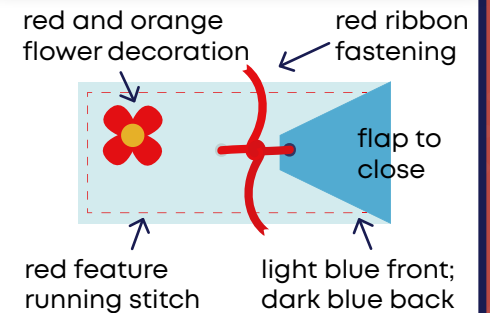
who is the pencil case for?

**function**

what is the pencil case for?

**appearance**

what will the pencil case look like?



stitches

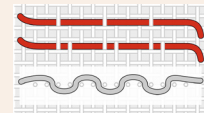
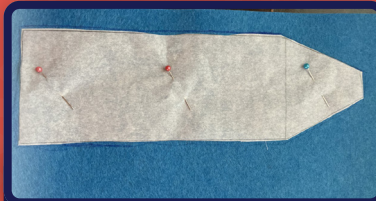


Image: Stitfehler  
(CC BY-SA 4.0)  
recoloured

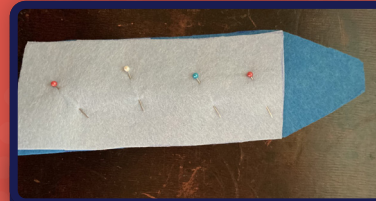
running stitch



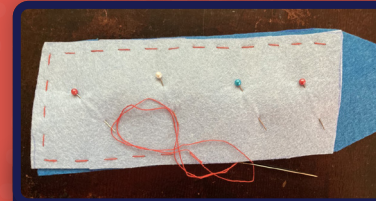
make the template / pattern for the back and the front



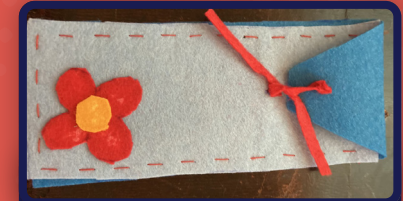
pin the template / pattern on the fabric; draw round it and cut out



pin the back and the front together



use running stitch to join the back and the front together on three sides



glue on your fastening and decoration