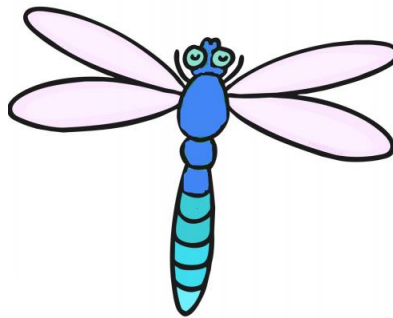




Welcome to Beaver Green Nursery

Dragonfly Room

2 year old room



Address - Cuckoo Lane, Ashford, TN23 5DA

Phone: 01233 621989

Website - <https://www.beavergreen.org.uk/>



Welcome to Beaver Green Nursery

We are looking forward to meeting you and your child and sharing lots of special times together. We provide high quality education and care for children aged 2-4 years, through a range of fun and exciting activities which follow the interests and development stages of individual children.

Starting at Beaver Green Nursery

Starting at Nursery is a very exciting time but can also be quite daunting for you and your child! We want your child to feel safe, secure and happy so that they can play, learn and be stimulated within the environment. We will therefore work sensitively with yourself and your child to ensure that the transition process is smooth and effective for all involved.

Staff

Dragonfly Room

Mrs Wood - Nursery Manager

Mrs Waller - Key person

Mrs Cooper - Key person

In our 2 year old room, we currently are offering a maximum of 8 children with 2 adults, with the ratio of 1 adult to every 4 children.

Admissions

Some children will be entitled to Free for 2 funding which gives them 15 hours funded sessions per week. If you think you may be entitled, please check here.

https://kentcc-self.achieveservice.com/en/AchieveForms/?form_uri=sandbox-publish://AF-Process-a0ee30e7-feb6-4a5c-8ca8-3c5f944e6f1f/AF-Stage06c32f98-563d-4bfa-a88c-a466e818f6e9/definition.json&redirectlink=%2Fen&cancelRedirectLink=%2Fen&sentMessage=yes

Children who are entitled to free for 2 funding can start at our Nursery the **term** after their 2nd birthday.

Children who are fee paying can start the **day** after their 2nd birthday.

Hours

We are open term time only, the same as the Primary school. Our 2 year old room is open 8:45 - 3pm everyday. Sessions run as the following, morning session 8:45 - 11:45, and afternoon session 12-3. Children can opt for half days or full day sessions. Please let us know your preferred sessions and we will try our best to accommodate them.



If your child will be here for a full day, they will need to bring a packed lunch including a water bottle. Hot school dinners are available to purchase from the school, please see the office if you would like to do this.

Daily Routine and Settling at Nursery

The first few weeks when your child is settling into Nursery are very important and play a large role in their later happiness in the setting. We will take steps to ensure that the transition goes as smoothly as possible. Research shows that when the settling in period is positive for the child, it can not only impact on their happiness throughout their time at Nursery, but also on how a child views future transitions. Children who have a positive start to their new environment are more likely to feel comfortable, relaxed and valued, feel good about themselves as learners and have a sense of belonging to the Nursery.

If your child is taking a little longer to settle, we will work with you and talk about different strategies that can be put in place.

Key Person

Each child in the Nursery will be assigned to a Key Person for each room they are in. The key worker is your main point of contact when talking about your child as they will spend a lot of the day with your child and oversee their learning journeys and next steps. They will personalise the child's experience at nursery by getting to know their interest and needs and tailoring the activities and learning challenges to suit your child. These records and observations will be shared regularly with you through the parent app we use and in your child's folder that will be shared throughout the year via stay and play sessions.

Home visit/ meet your key person meeting

Before your child starts with us we will offer you a home visit. This is an opportunity for you and your child to meet your child's key person and for us to start getting to know you. It is a great opportunity for you to ask any questions about your child starting with us. Home visits are optional, but we see them as a great opportunity to start building a relationship with your child in the comfort of their own home.

Please note, due to the current pandemic, we are offering a 'meet your key person meeting' instead. These will be held at the Nursery at the moment. We kindly ask that only the child's parents attend with their child.

Settling sessions

We understand that your child starting Nursery can be an unsettling time for you and your child. At Beaver Green Nursery we offer settling sessions before your child starts their usual sessions with us. These sessions can be tailored to suit the needs of the child, but we usually offer one session where we invite the parents to stay, and then



one session where the child stays on their own. These sessions usually last around half an hour and the Nursery will be open like a normal day for your child to play and explore. This is an opportunity for your child to get used to their surroundings and begin to feel comfortable in the setting. If you or your child feel they will benefit from more settling sessions, we will accommodate these as best we can.

What to bring

We ask that you send your child in appropriate clothing that you do not mind getting messy! School uniform for Nursery children is optional. If you are interested in purchasing our school uniform, please speak to the school office.

. You will also need to bring:

- A full change of named clothing that is to be kept in a bag on your child's peg.
- A named pair of welly boots that will stay at the Nursery.
- A water bottle
- Appropriate seasonal weather – Rain coat for rain, sun hat in the summer etc.
- Nappies/Pull-ups and wipes if your child is wearing them or toilet training.

Please make sure you label/name all of your child's belongings.

Learning and Development

We follow the 'Early Years Foundation Stage Framework' (EYFS) which starts from birth and continues through a child's time at nursery until the end of their Reception year at school. All of the staff in the nursery are highly skilled in planning and delivering a range of activities for the children. All of these activities are delivered through a balance of child initiated and adult led activities.

Your child will be learning skills, acquiring new knowledge and demonstrating their understanding through seven areas of learning and development.

Children should mostly develop the three **prime areas** first. These are:

- Communication and language
- Physical development; and
- Personal, social and emotional development.

As children learn and grow, the prime areas will be developed and applied in the four **specific areas**. These are:

- Literacy
- Mathematics
- Understanding of the world; and
- Expressive arts and design.

Within these seven areas, we plan for purposeful learning and development that is suited to all of the children's individual needs and abilities.

Children in the EYFS learn by playing and exploring, being active, and through creative and critical thinking which takes place both indoors and outside.



Illness/absence

If your child is ill or unable to attend you must call to inform us before the child is due to attend the session. We request you keep your child at home if they are ill to minimise the risk of the illness spreading to others that attend. For contagious illnesses, e.g. Chicken Pox we will provide information for parents of those children who have been in contact with them within their sessions.

As we have a responsibility to safeguard our children, if we do not hear from the parent/carer of an absent child we will contact them.

Medicines

We can administer medicines but only ones which are prescribed by a doctor, dentist, nurse or pharmacist with clear instructions. Before we can administer the medicine, a form must be filled out by the parent/carer. The medicine must be delivered and collected from the main office each day. When medicine is given to the nursery it

must be in the box with the pharmacy label on which outlines the instructions and clearly shows the child's name.

Nappy Changing and Toileting Needs

We have changing areas and child friendly toilets which suit the needs of the children's ages and stage of their toilet training. Staff follow a strict procedure to change nappies or children who may have had an accident (see policy). For those children who are toilet training we try to replicate what they experience at home to make the transition easier. Therefore, it is important for parents to keep their child's key worker up to date with their routines. Our toilet facilities contain; smaller toilets to allow the children to be confident and comfortable. We also have child height sinks and a walk up changing area.

Progress Check at Age Two

All children at Beaver Green Nursery aged between 2 – 3 years will receive a two-year check. This will be a short-written summary of the child's development in the prime areas of learning. It will also include comments on their strengths, next steps and whether there are any concerns with their development e.g. special education needs. With these concerns, we will provide actions the nursery will take to address them. We have a section on the report where parents can contribute and add extra information.



Please look on our school website [for our Nursery policies](#). For more information please contact our school office.